



**Kömmerling®**

TODAY FOR TOMORROW



# **KÖMMERLING 76 CENTRE SEAL SYSTEM**

BEAUTIFUL PROSPECTS FOR YOUR FUTURE.



# VIEWS WITH A PROFILE.

SUCCESSFUL PROSPECTS, RIGHT FROM THE START.

High-quality solutions tailored to customer needs: This has been precisely the Kömmerling vision from the very beginning. Even when Karl Kömmerling founded the company in 1897, he focused on high standards, advanced technologies and tailored products. Kömmerling continues to follow this recipe for success. Initially, adhesives and synthetic rubber were produced, and in 1957 plastic roller shutters were added.

## WINDOWS THAT BRING A NEW PERSPECTIVE

1967 marked another milestone for today's activities. That's when Kömmerling started producing high-quality window profiles made of PVC-U. This ultimately resulted in a whole range of high-quality window and door systems. Solutions that customers can rely on – because each of the Kömmerling products builds on the entirety of our experience, years of research and development, state-of-the-art computer technologies and the results of countless tests. In doing so, we always consider sustainability and future-proofing. In this way, every single product is a real Kömmerling. Perfect for gazing into the distance, discovering new perspectives and looking ahead.







# SHINE LIKE THE SUN.

**Light is exhilarating, motivating, inspiring. Wouldn't it be nice if we could savour this effect as often as possible?**

Kömmerling 76 window systems are ideal for this. We use innovative technologies to manufacture windows with large glazed areas and slender profiles. This gives the incoming sun enough space to stream in, creating rooms flooded with light.

For all their transparency, Kömmerling 76 solutions are extremely resilient thanks to high static stability and state-of-the-art functional glazing. At the same time, the generous glass fronts provide the basis for optimal heat utilisation. This saves heating costs and conserves resources.

Or to put it another way: With Kömmerling 76 windows, you bring the sunshine to you – in every respect.

## AT A GLANCE

- > The intelligent profile design improves window stability
- > The slender profile sight lines create optimum space for the greatest possible amount of incoming light
- > Higher solar energy gains additionally reduce heating costs



# ENJOY THE UNNNY SIDE OF LIFE!

Kömmerling 76 windows will quickly warm your heart: You can reduce heating costs, thus making your budget go further and contributing to climate protection through the careful use of resources. But more than that – we even make saving energy a real pleasure. Our window solutions are also impressive thanks to their comfort and elegant, understated look.

## INTELLIGENT TECHNOLOGY ALL AROUND

Three aspects are particularly important for thermal insulation: The profile, insulating glazing with the edge connector and the wall connecting profiles. We have considered all this in our window designs and optimised them effectively. The special highlight is that Kömmerling 76 windows can be additionally reinforced with an aluminium static profile (AluClip Pro). This additionally improves the thermal insulation properties of the window solutions, which are already good to start with. This is because aluminium has far better thermal conductivity than steel, for example.

## GLAZING WITH POWER

High-quality triple glazing or functional glazing up to 50 millimetres thick can be used in Kömmerling 76 windows. Shielded in this way, no heating energy is lost, and the generous windows let in a particularly large amount of solar heat. For sunny prospects all round!



### AT A GLANCE

- > Centre seal system with high thermal insulation and 76 mm installation depth  $U_f$  value = 1.0 W/(m<sup>2</sup>K) already included in the standard design
- > Large range of glazing variants up to 50 mm provide the basis for modern triple glazing or special functional glazing
- > Maximum use of solar heat





# LIVE SAFELY. SLEEP PEACEFULLY.

## SAFETY IN SIGHT

Invitingly beautiful windows, balcony and terrace doors also attract unwanted guests. But you can put a stop to these. Thanks to our clever design, Kömmerling 76 windows can be effortlessly fitted with burglar-resistant hardware and safety glass. This thwarts burglars because you make it more difficult for them to lever open windows or knock in panes. And you can sit back and relax.

## AT A GLANCE

- For windows up to resistance class RC 2 (MC 2)
- Designed for burglar-resistant hardware



# SOUND INSULATION – FOR PEACE AND QUIET.



Optimal quality of life includes a quiet, low-noise environment – you probably experience it yourself every day. Windows from the Kömmerling 76 series support you in creating this perfect relaxing environment thanks to innovative sealing technology for the profiles and sound-insulating glass. This way, you can transform your home into an oasis of calm, even when the traffic is roaring by outside.

#### AT A GLANCE

- > Use of sound-insulating panes possible
- > Optimum sound insulation of up to 47 dB





# ALL AROUND A CLASS OF ITS OWN.

We all want a world worth living in, for ourselves and our children – today and in the future. It's good when there are window solutions like Kömmerling 76. They are designed with longevity, energy efficiency and sustainability in mind, as well as their classic, timeless design, pioneering operating and living comfort and flexible application options. What more could you want?

## AT A GLANCE



### Improved designs

Slender profiles allow for large glazed areas. In addition, there is a wide range of colours (from wood grains to plain tones) thanks to laminated profiles and aluminium cladding for individual finishing.



### Improved thermal insulation

Even the standard version has windows with excellent thermal insulation properties.



### Improved security

The window profiles can be reinforced with security hardware and additional burglar-resistant measures without any problems.



### Improved sound insulation

Combined with high-quality sound-insulating panes, the Kömmerling 76 system offers optimal noise protection of up to 47 dB.



### Improved stability

High-quality steel reinforcements provide perfect window statics. In the AluClip Pro design, this is ensured by the aluminium functional profile, which also reduces the weight.



### Improved easy care

The surfaces of the window frames are extremely weather resistant and easy to clean.



### Improved handling ease

The innovative fittings technology makes opening and closing the window solutions effortless.



### Improved ventilation

A sophisticated ventilation program ensures a cosy living climate.



### Improved lasting value

The high quality of all components and the use of high-quality, eco friendly plastics in accordance with greenline principles ensure long-lasting solutions. This increases the value of your property in a sustainable way.

# THE BEST CLIMATE FOR YOUR HOME THANKS INNOVATIVE TECHNOLOGIES.

Kömmerling 76 has its eye on the future. This window system combines the most cutting-edge technologies currently available for PVC-U windows. The flexible modular principle, for example, is groundbreaking. This allows you to put together exactly the window solution that is ideal for you and your budget.

## SLENDER DIMENSIONS, QUICK INSTALLATION

The slim profiles are already innovative, even providing the basis for triple glazing with modern insulating panes. Convenience is a priority: Thanks to intelligent fastening techniques, Kömmerling 76 windows can be installed quickly, cleanly and without great effort. Replacing old windows can also be done quickly.

### 1 HIGH THERMAL INSULATION VALUE

Even the standard design of Kömmerling 76 is impressive with an excellent thermal insulation value of  $U_f$  value = 1.0 W/(m<sup>2</sup>K).

### 2 HIGH DIMENSIONAL STABILITY

Cleverly designed contact points keep the steel reinforcement in the correct position.

### 3 GROUNDBREAKING CHAMBER CONSTRUCTION

The chambers in the profiles have been developed using the very latest computational methods. The result: High thermal and sound insulation as well as optimum stability of the profile and high load-bearing capacity, even with heavy glass.

### 4 SAFE FUNCTIONALITY

Kömmerling 76 can take a lot thanks to its intelligent features. The load-bearing hardware is screwed through several profile walls. Furthermore, there is additional thickness due to special bolting cams in the main load zones.

### 5 WIDE RANGE OF GLAZING VARIANTS

You can choose between different 50-millimetre glazing, whether as triple glazing or as special functional glazing such as thermal insulation glass, safety glass or sound-insulating panes.

### 6 FLEXIBLE, CLEAN INSTALLATION

Windows of the Kömmerling 76 series can be fixed with mounting dowels through steel, with classic fixing brackets or a special dowel chamber in the PVC-U. Installation is quick, clean and safe.

### i A GREAT DEAL OF DESIGN FREEDOM

Let your imagination run wild. Numerous laminations, Kömmerling AcrylColor coloured window profiles and different aluminium cladding offer many creative possibilities.





# AND BREATHE.

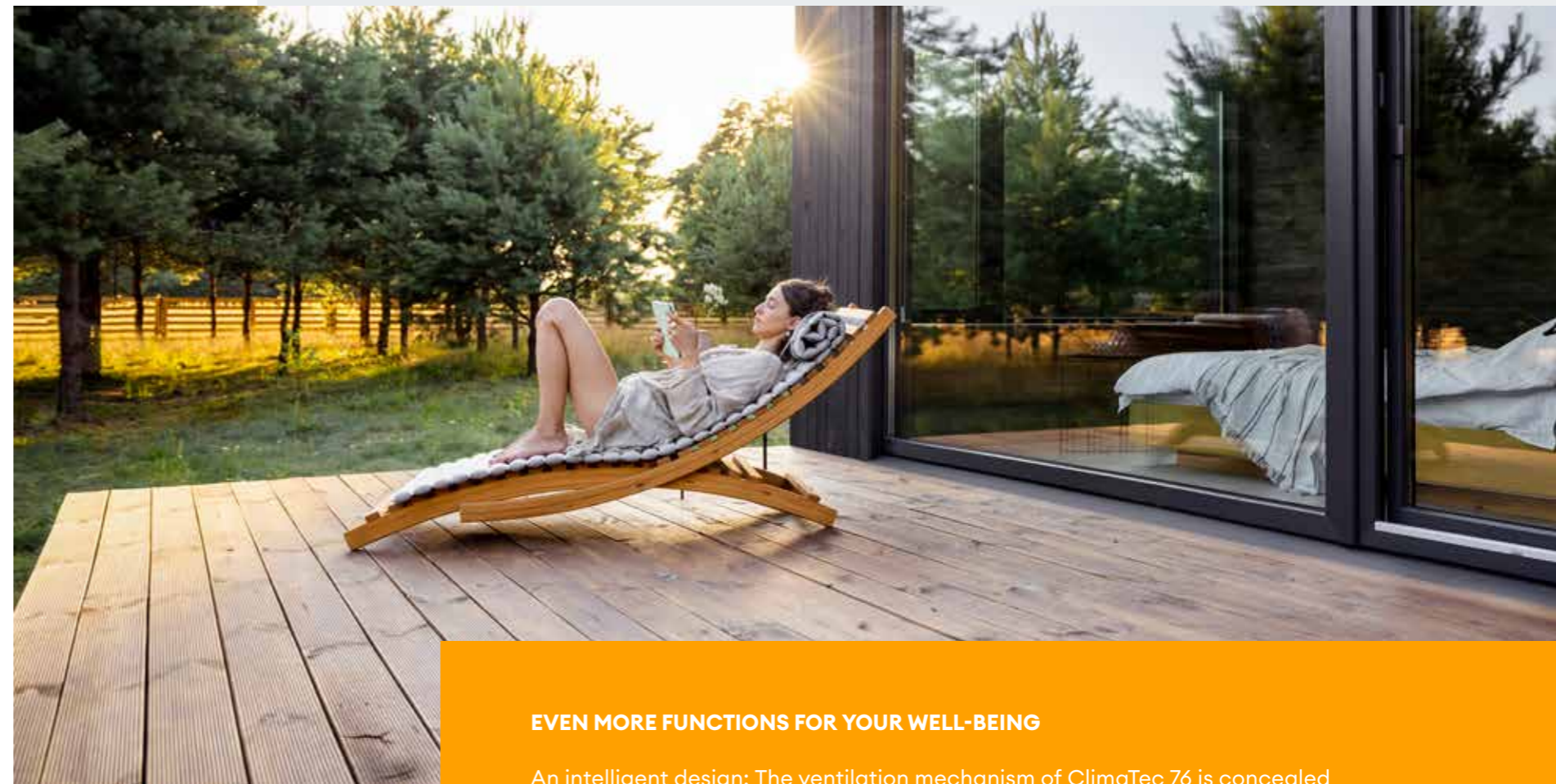
## ClimaTec 76

Our homes are becoming better and better insulated – in fact both an advantage and a challenge at the same time. This is because inadequate ventilation causes the relative air humidity to rise, creating not only an uncomfortable climate, but also encouraging the growth of mould, which can attack the building fabric, for example. However, if you ventilate too often, you are essentially blowing energy out the window and polluting the environment.

But there is a sustainable way to do it: With ClimaTec 76 from Kömmerling. Even without active ventilation, it ensures a fully automated controlled supply of fresh air with minimal heat loss. And the only thing that takes your breath away is the beautiful view.

### AT A GLANCE

- > Self-regulating, easy-to-clean ventilation system
- > Minimises high air humidity and the risk of mould
- > Ensures a controlled supply of fresh air
- > Protects against insects thanks to integrated ventilation grille
- > Almost invisible from the inside and outside, as ClimaTec 76 is concealed in the outer frame
- > Automatic wind pressure regulation
- > Complies with the German Energy Savings Act
- > Tested sound insulation up to 43 dB (SSK4)
- > Tightness against driving rain and passage of air as per DIN and EU standards
- > Ventilation as per DIN 1946-6



### EVEN MORE FUNCTIONS FOR YOUR WELL-BEING

An intelligent design: The ventilation mechanism of ClimaTec 76 is concealed in the outer frame rebate and is therefore almost invisible. But the effect is huge: It provides a controlled supply of fresh air – without manual ventilation and with no need for a power source.

### FOR A PLEASANT CLIMATE IN EVERY WAY

The ClimaTec 76 ventilation system effectively regulates indoor air humidity. This reduces the risk of mould enormously. The wind pressure regulation is automatic and, of course, complies with the specifications of the German Energy Savings Act as well as the DIN and EU standards for tightness against driving rain, sound insulation and living space ventilation. Good for you and good for nature.

Installation fan	Sound test values in dB*			Passage of air in m³/h				
	A	B	C	2 pairs	4 pairs	5 pairs	7 pairs	8 pairs
ClimaTec 76								
250/200	37	41	41	3	4	5	6	6
300/250	37	41	40	3	5	5	7	7
350/300	37	39	39	4	5	6	7	8
350/350	34	37	37	5	7	8	9	10
400/350	34	36	35	5	8	9	10	11
400/400	32	33	33	6	9	10	12	12
1 fan	38	43	43	2	3	4	5	5

\*Pane structure: A) 6/16/4/14/4 (36–37 dB) B) 8 composite security glass SI/12/6/12/8 composite security glass SI (45 dB)  
C) 12 composite security glass SI/20/8/20 composite security glass SI (48 dB)



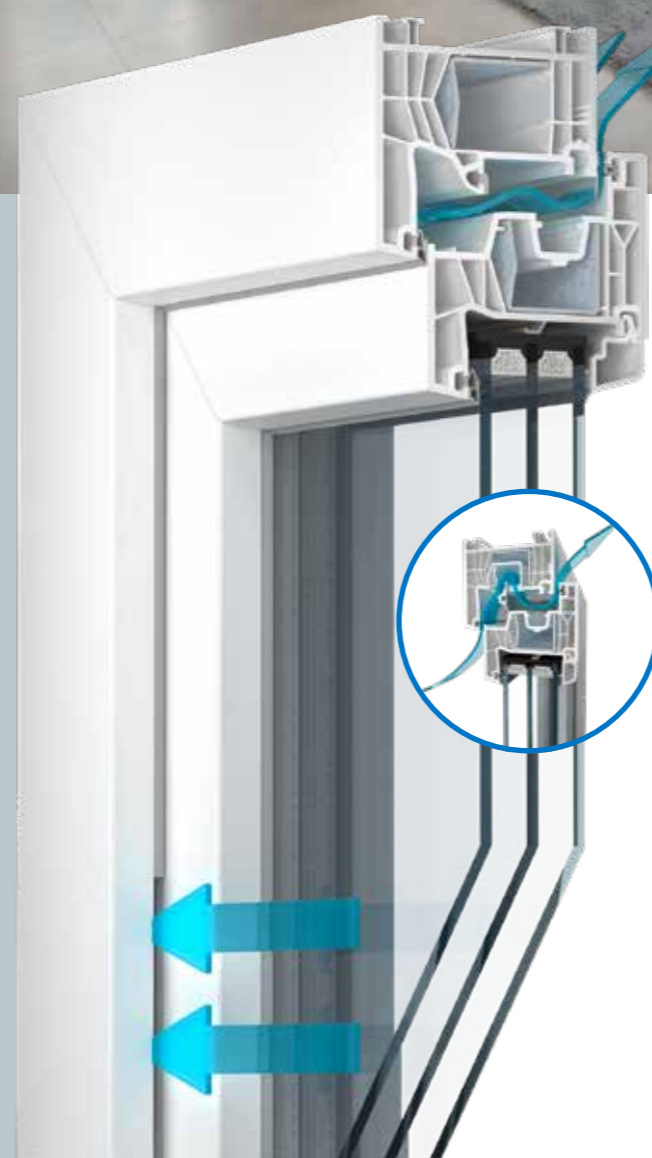
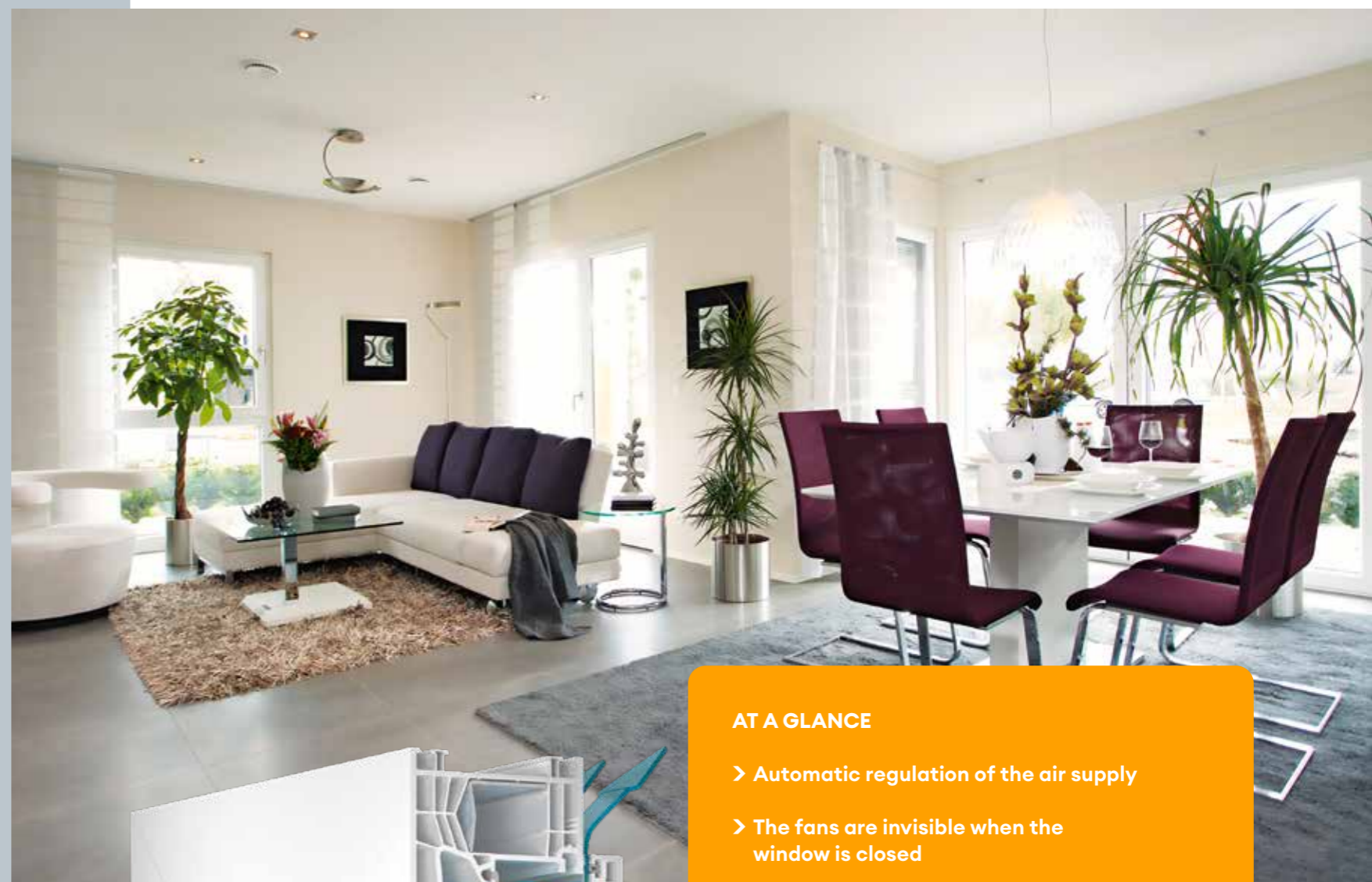
# LIVE IN COMFORT WITH A GUARANTEE OF FRESHNESS.

## ClimaTec Plus

The new ClimaTec Plus self-regulating window rebate ventilators are ahead of the pack. Without any manual ventilation and even when the windows are closed, they ensure a controlled supply of fresh air. They are also visually highly impressive, since the window rebate ventilators are available in light grey or black. This means they remain almost invisible when the window is open.

### WORTH KNOWING FOR PLANNERS AND ARCHITECTS

- > Window rebate ventilators replace the frequently used sash overlap seal and are mounted in the upper area of the window sash.
- > The number of fans (maximum three) depends on the required air quantity and sound insulation.
- > Air flows via the window rebate, the space between window sash and outer frame. The outer frame seal is replaced with replacement seals in certain places. This allows the air to flow into the window rebate due to pressure differences and further into the room interior via ClimaTec Plus.
- > The centre seal in the upper area is notched to the fan length. The innovative flow control technology of the regulating flaps ensures sensitive airflow regulation. This limits the flow of air under high wind loads and prevents draughts.



### AT A GLANCE

- > Automatic regulation of the air supply
- > The fans are invisible when the window is closed
- > For new windows or for retrofitting existing windows
- > The flow of air is regulated so that there is no draught
- > Can be installed independently of hardware, as they are mounted across the top
- > Minimises high air humidity and the risk of mould
- > Tested sound insulation up to 44 dB
- > Low space requirement thanks to compact design with precise flow control technology
- > Fully tested by the window technologies institute ift Rosenheim
- > Ventilation as per DIN 1946-6 and DIN 18017-3

ClimaTec Plus 76 MD	Variant 1 single	Variant 2 double	Variant 3 triple	Variant 4 single acoustic	Variant 5 double acoustic	Variant 6 triple acoustic	
<b>Test report no.</b>	<b>8_001463_PR13 (see GAS: 18_001463_PR14)</b>						
	(Pa)	Air m3/h					
Air volume flows	2	2.2	4.5	5.4	2	3.1	3.3
	3	2.8	5.5	6.7	2.5	3.9	4.2
	4	3.3	6.4	7.8	3	4.6	5
	5	3.7	7.2	8.8	3.4	5.2	5.8
	6	4.1	8	9.8	3.8	5.8	6.4
	7	4.5	8.6	10.6	4.1	6.3	7.1
	8	4.8	9.3	11.4	4.4	6.8	7.7
	10	5.8	10.4	12.8	5	7.8	8.8
<b>Tightness against driving rain</b>	<b>Class</b>						
<b>A</b>	9A	8A	5A	6A	7A	4A	
<b>Pane structure</b> (Window value without fan in dB)	<b>Airborne sound insulation/test value in dB</b>						
<b>4-46-4</b> (24 mm/34 dB)	34	31	29	34	33	32	
<b>8-16-4</b> (28 mm/39 dB)	38	33	31	38	36	35	
<b>12 SI-20-8-SI</b> (40 mm/47 dB)	42	34	32	45	39	37	
<b>8-12-4-12-4</b> (40 mm/40 dB)	39	33	32	40	37	36	
<b>10-14-4-14-6</b> (48 mm/42 dB)	40	33	32	41	37	36	



# COLOURFUL DIVERSITY, GREAT EFFECT.



Windows lend a building a sense of character. Frame colours, materials, shapes and sizes – you can play around with them to give your building or your apartment a distinctive touch.

Kömmerling 76 is a real inspiration for this, whether for new buildings or renovating historic buildings. How about windows that blend seamlessly into the façade design? Or striking solutions that say: "Look, here I am"? All this is possible thanks to a wide range of frame colours and finishings.



## ELEGANT WHITE

White is the classical design par excellence, but is also delicate. But Kömmerling 76 windows are made of high-quality PVC-U, which is characterised by extreme weather resistance. This keeps the smooth, glossy surface of the window frames looking beautiful for a long time. Practical for everyday life: The windows are extremely easy to clean.



## LAMINATION IN PLAIN COLOURS

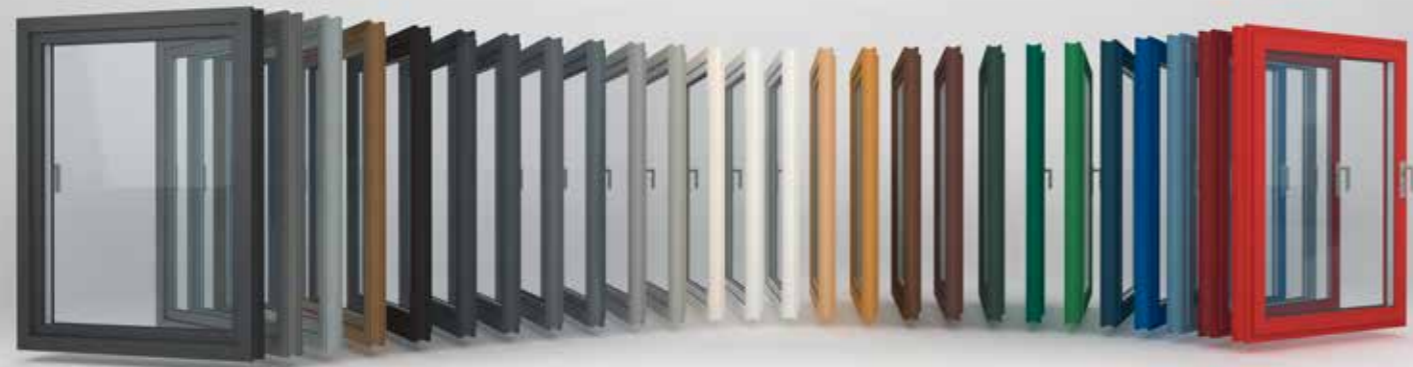
Vibrant red, delicate blue, elegant dark grey: With laminated solutions, you are spoilt for (colour) choice. However, the plain-coloured versions have one thing in common with the white variants: They are also highly weatherproof and easy to clean.



## WOOD GRAIN LAMINATION

Lamination with wood grain kills two birds with one stone. They give your home a cosy feeling of a traditional house and yet are multifunctional because the windows are made of durable PVC-U. This saves the need for regular repainting, as is necessary with wooden profiles.





protected by colour

# THE CLEVER FINISHING.

proCoverTec

Aesthetically and functionally compelling – that's our unique surface technology Kömmerling proCoverTec through and through. The window profiles finished with it are extremely tight, appear homogeneous and are very robust. The slightly structured surface results in a pleasant feel. In addition, proCoverTec surfaces are very suitable for all occasions: They protect the window profiles to the max and reduce adhesion of dirt particles.

While the indoor side always remains neutral white, there is a wide range of plain and metallic colours to choose from for the outer finishing. However, one thing is always the same: The satin look of the surfaces has a highly refined effect.



# COLOURS WITH A PROTECTIVE EFFECT.

AcrylColor

Kömmerling AcrylColor offers a range of colours and a protective shield at the same time. The principle: Thanks to a heat treatment process, the acrylic is inseparably bonded with the PVC. This ensures that the window profiles remain colourfast for a long time. They also have high scratch resistance, are easy to clean, weather resistant and virtually maintenance-free. Another advantage: AcrylColor profiles are 100% recyclable.





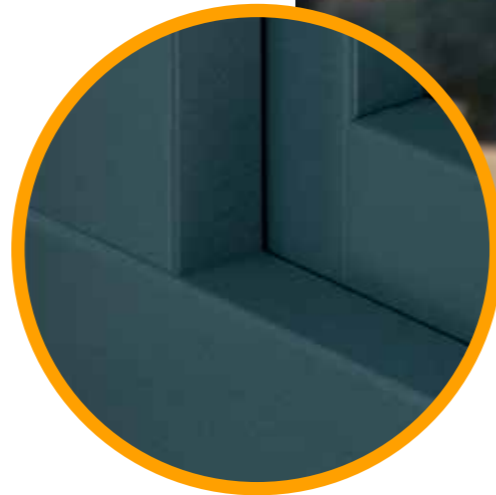
# ALUMINIUM AND PVC-U: THE PERFECT DOUBLE ACT!



## (ENERGY) EFFICIENCY IN MANY FACETS.

Aluminium and PVC-U are the perfect pair in our Kömmerling 76 window solutions. Aluminium looks elegant, is extremely weather resistant and robust. At the same time, the material is impressive thanks to its stability and ease of care.

With aluminium, you can also really revel in colours. This is because it can be coated with powder finishing in RAL colours or anodised in the shades of your choice. PVC-U is also a permanent fixture in this partnership of materials: On the other side of the profile, it ensures optimum thermal and sound insulation as well as high functional reliability. The result is energy-efficient window solutions that are also pleasing to the eye.



### AluClip

The aluminium cladding on the Kömmerling 76 combines an elegant aluminium design in a virtually unlimited range of colours with an innovative PVC-U profile that guarantees optimal insulating values.



### AluClip Pro

On the AluClip Pro, the aluminium profile is bonded to the PVC-U profile. The aluminium takes on the static function, meaning that steel reinforcement within the window sash is not required.



### AddOn

As you like it: On request, your Kömmerling 76 window solutions can be equipped with additional shutter systems and sunshades. In combination with the additional pane, this means greater thermal and sound insulation and therefore even better energy efficiency.



# AS FLEXIBLE AS YOUR LIFE.

Pioneering functionality, a standardised look throughout the house and customised design options – that's what our comprehensive Kömmerling 76 window and residential door system has to offer. Whether you prefer discreetly understated or expressively colourful window and door solutions, you've come to the right place.



## SAFE AND DECORATIVE

Burglar-proof front doors, which you can also design to your tastes, provide additional security. As far as the look is concerned, it's up to you: Do you prefer modern functional glazing available in numerous surface patterns and colours? Or would you prefer glazing with LED effect lighting? Patterned glazing? Further alternatives are offered by the extensive prefabricated panelling selection from renowned panelling manufacturers.



## AT A GLANCE

- **Broad product diversity:** House, balcony and terrace doors, parallel sliding-tilting doors
- **High burglary protection up to resistance class RC 2 (MC 2)**
- **Maximum dimensioned steel reinforcement and welded corner connectors for greater stability**
- **Maximum sash sizes:**  
Single-leaf residential door 1200 x 2400 mm  
Floating mullion residential door 1000 x 2400 mm
- **Use of special functional glazing or commercially available residential door panelling up to 50 mm**
- **High level of tightness thanks to double sealing for thresholds**
- **Perfect protection against driving rain and wind**
- **Excellent thermal insulation**
- **Wide design spectrum thanks to broad colour range, structured surfaces and elegant aluminium cladding**





# CLIMATE PROTECTION THAT YOU ENJOY EVERY DAY.

Think about tomorrow today: This is a principle that has guided us in the design and structure of our Kömmerling 76 window and door system. What does this look like? For example, in carefully considered functions, outstanding insulating values and efficient use of materials. In practice, this means: You can enjoy user-friendly, elegant windows and doors that protect valuable resources.

## SUSTAINABLE PCV-U WINDOWS: NO LONGER THE STUFF OF DREAMS

All our Kömmerling 76 windows and doors are made of a PVC-U with the greenline label. We do not use lead as a stabiliser and instead use an eco friendly stabiliser based on calcium-zinc. And at the end of a life cycle, old windows become components for new windows again. What an all-round great concept!

**greenline** 

### AT A GLANCE

- > Optimised use of materials, which therefore saves resources
- > Eco friendly, lead-free stabilisers with the greenline label
- > A material cycle with proper recycling
- > High contribution towards reducing CO<sub>2</sub> emissions thanks to the high level of thermal insulation. You consume less heating energy, which has clear benefits for the environment





# COME ON IN – WELCOME TO A BEAUTIFUL FUTURE.

Visions only come to fruition through action. This is exactly what Kömmerling 76 is designed for, whether you are building or renovating. When you choose these innovative window and door solutions, you can look to the future with confidence: You can rely on high quality, longevity of all components and absolute energy efficiency. This not only reduces your costs, but also increases your comfort of living – and even the value of your property. In this way, you create a foundation for future generations that is both sustainable and expandable. Let the future come!



## AT A GLANCE

- › High energy savings and cost savings thanks to new highly insulating 76 mm system
- › Improved quality of life thanks to perfect sound insulation
- › Improved security thanks to integrated burglary protection
- › Easy to clean due to robust, weather-resistant surfaces
- › Of lasting value thanks to durable, high-quality design
- › Improved handling ease and reliable functionality through the use of state-of-the-art technology
- › Sustainability thanks to thermal insulation, climate protection and longevity



# #KömmerlingForTomorrow

profine GmbH  
**Kömmerling**

Zweibrücker Straße 200  
66954 Pirmasens  
Tel. +49 (0) 6331 560  
E-mail: [info@koemmerling.com](mailto:info@koemmerling.com)

[www.koemmerling.com](http://www.koemmerling.com)

